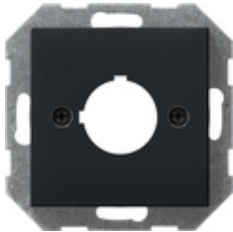









## Cover with support ring for holding command and signal devices (Ø 22.5 mm)



Spezifikation	Bestell-Nr.	VE	GBP/Stück o. MWSt.	PS	EAN
 cream white glossy	0272 01	1	11.58	01	4010337272014
 pure white glossy	0272 03	1/5	11.58	01	4010337272038
 pure white matt	0272 27	1/5	11.58	01	4010337272274
 anthracite	0272 28	1	14.13	11	4010337272281
 colour aluminium	0272 26	1	17.97	11	4010337272267
 black matt	0272 005	1	17.97	11	4010337036708
 grey matt	0272 015	1	17.97	11	4010337078777

### Hinweise

- For screw attachment only.
- For push buttons, palm buttons, key switches, rotary switches, indicator buttons, and mushroom buttons, as well as selector switches, and signal lights, e.g. made by Lumitas, Rafi, Elan or Fanal.