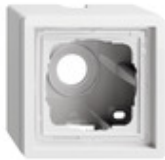



Surface-mounted housing, including cover frame pure white glossy



Spezifikation	Bestell-Nr.	VE	GBP/Stück o. MWSSt.	PS	EAN
 1-gang	0061 112	-	-	-	4010337043676

Merkmale

- With cable and duct inlet.

Technische Daten

Dimensions

- 1-gang: W 83.5 x H 83.5 x D 43.5 mm
- 2-gang: W 83.5 x H 154.4 x D 43.5 mm
- 3-gang: W 83.5 x H 226 x D 43.5 mm

Corner radius: R 3

Hinweise

- With the F100 switch range, rocker switches, push buttons and SCHUKO socket outlets with hinged covers are generally protected against dripping water (IP21) on the wall in conjunction with these housings.
- Key switches and three-stage switches cannot be installed in this housing.